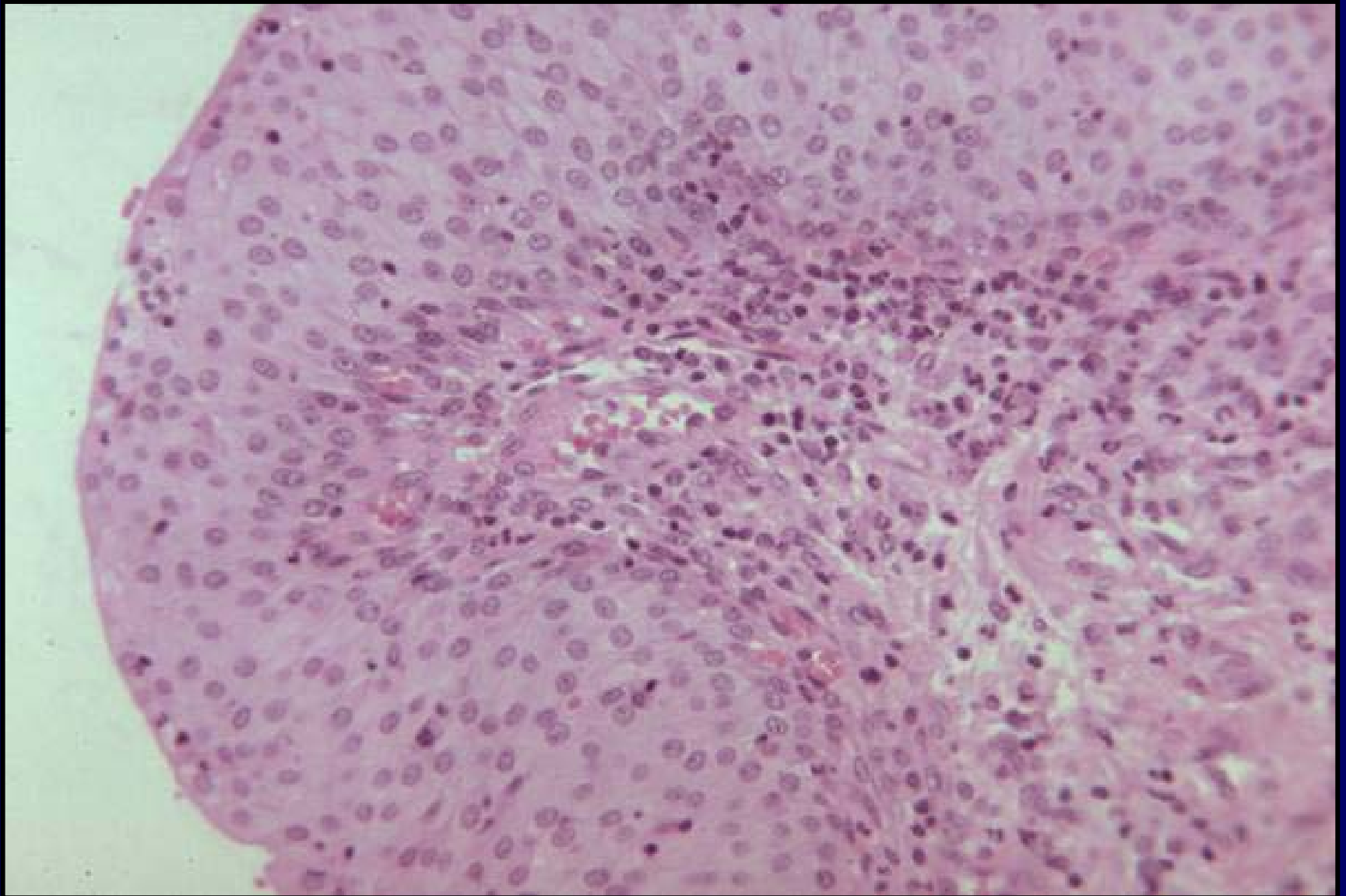
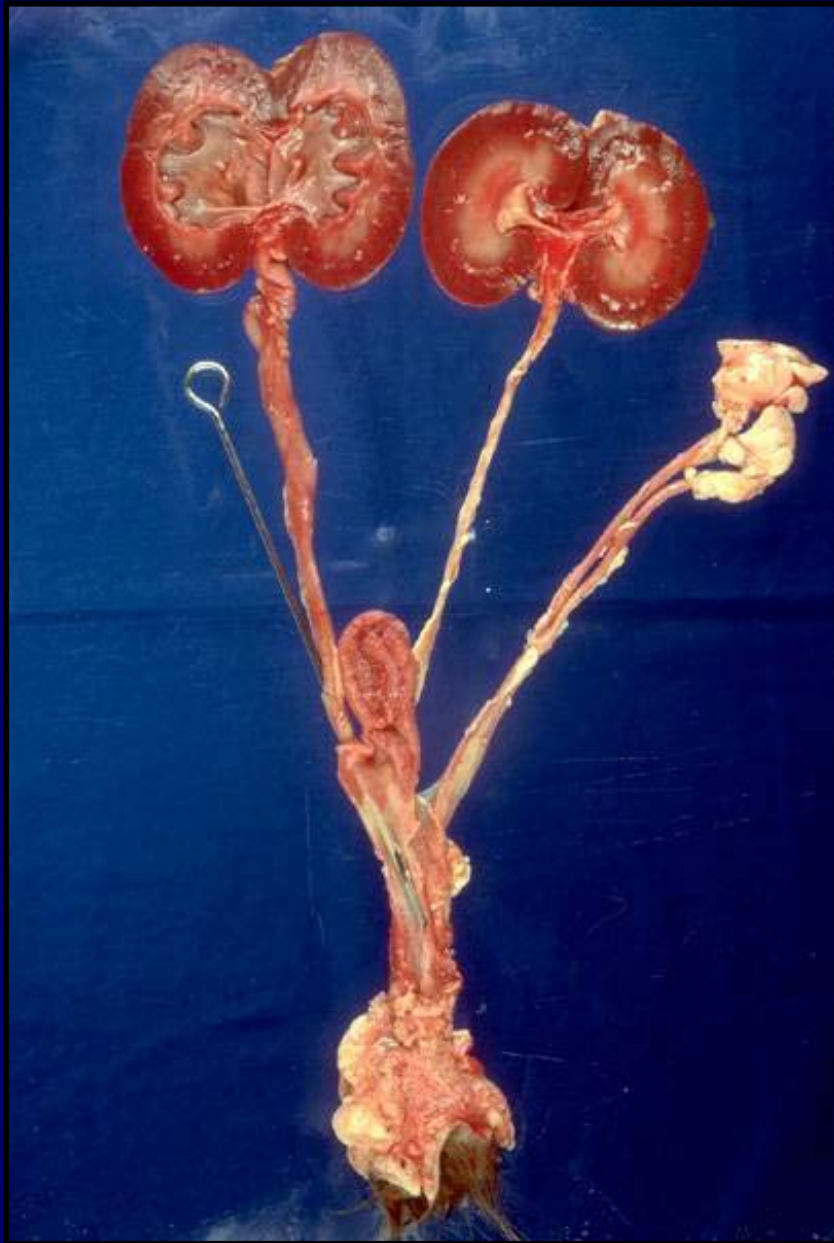


Lower Urinary Tract Pathology

Dog - chronic cystitis - hyperplasia of urothelium

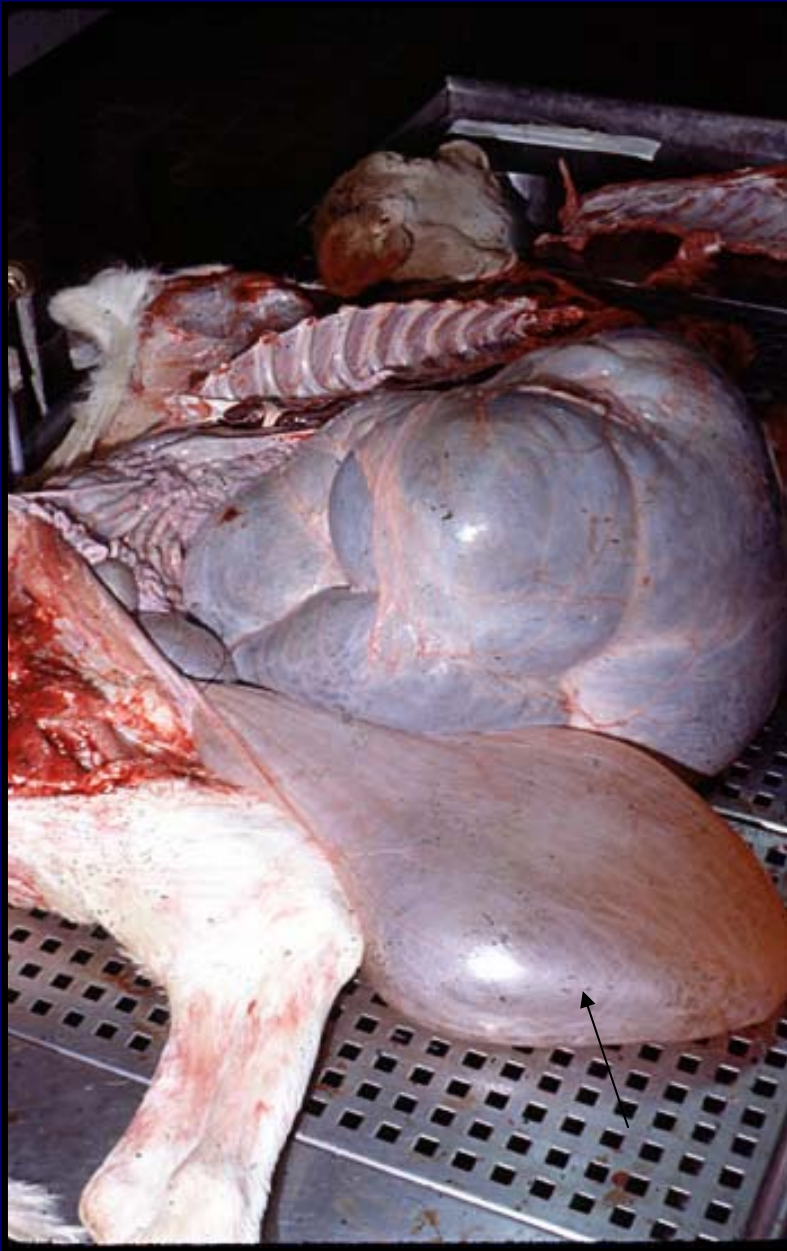




Bitch – ectopic ureter
with secondary
unilateral hydroureter
and hydronephrosis

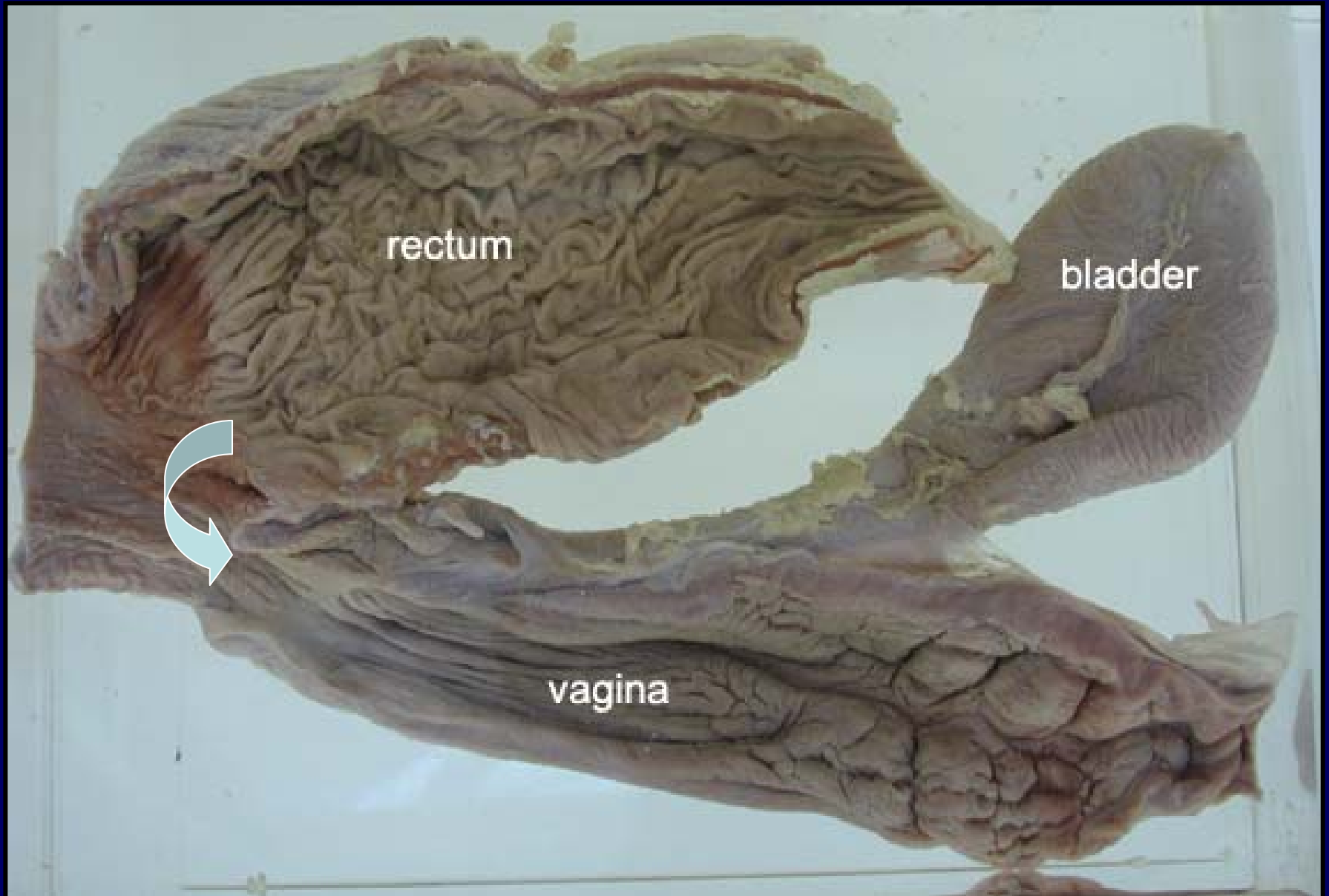
Dog – urachal diverticulum





Urachal cyst in a calf

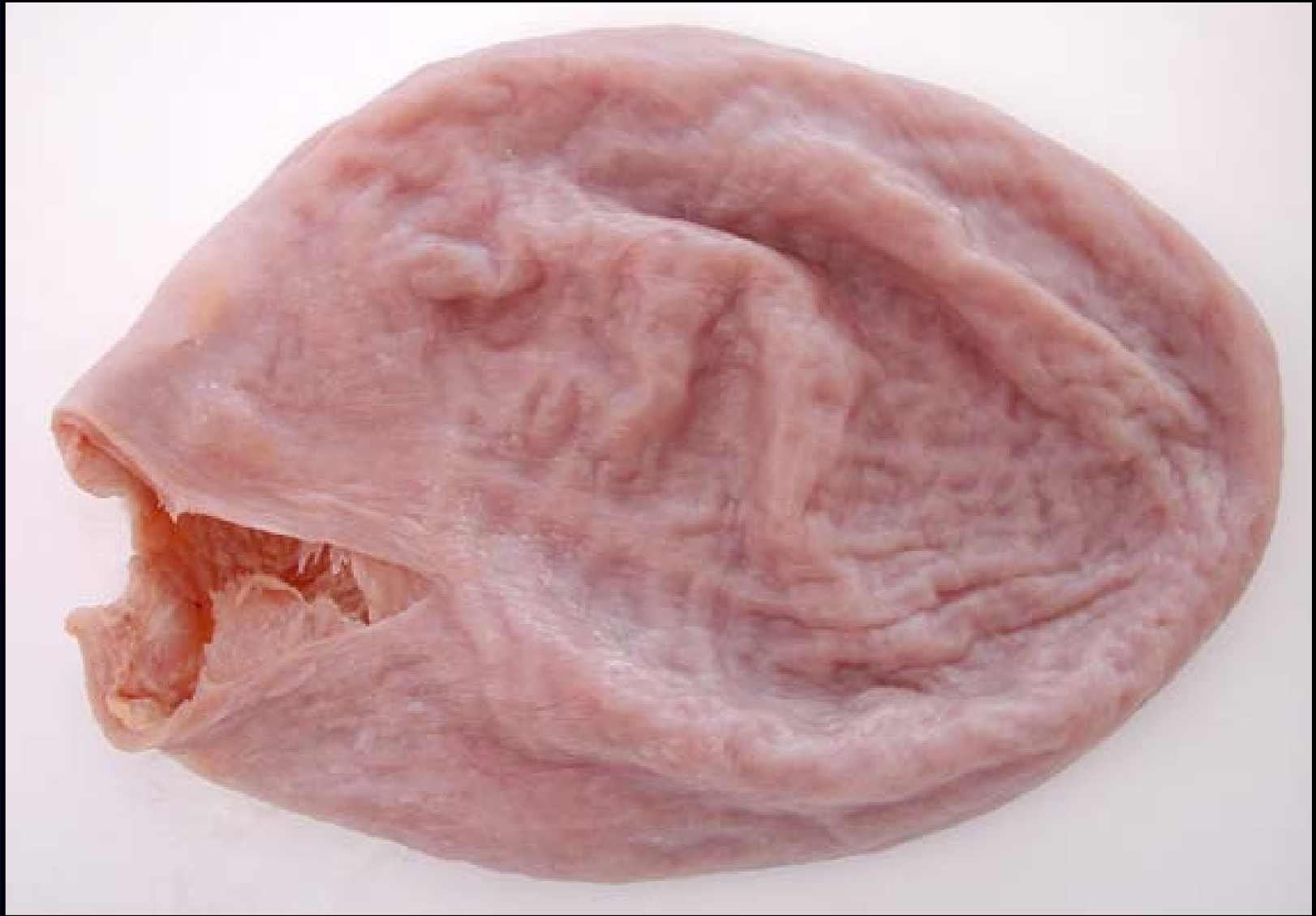
Rectovaginal fistula in a cow



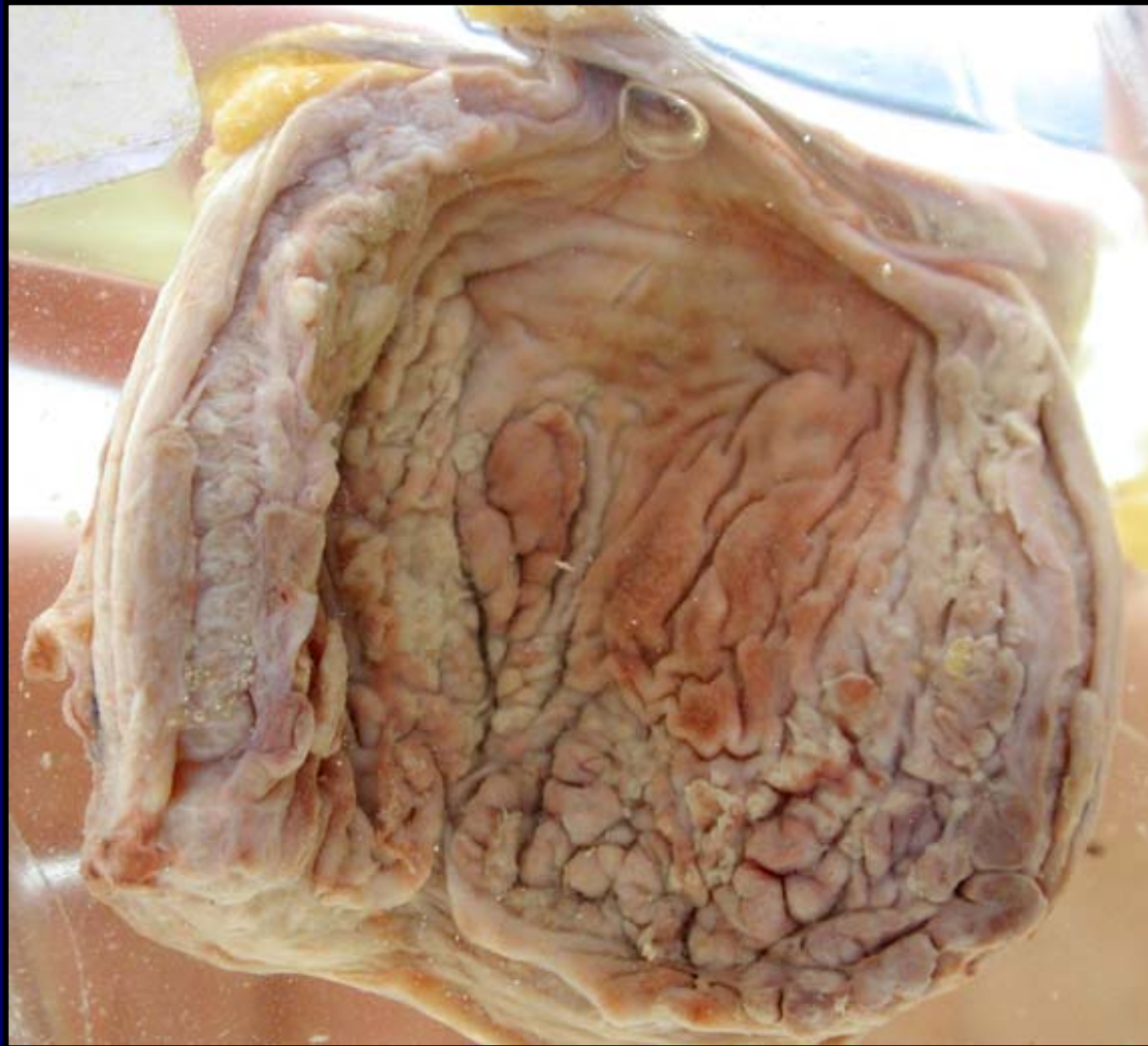


Dog – severe
hydroureter and
hydronephrosis

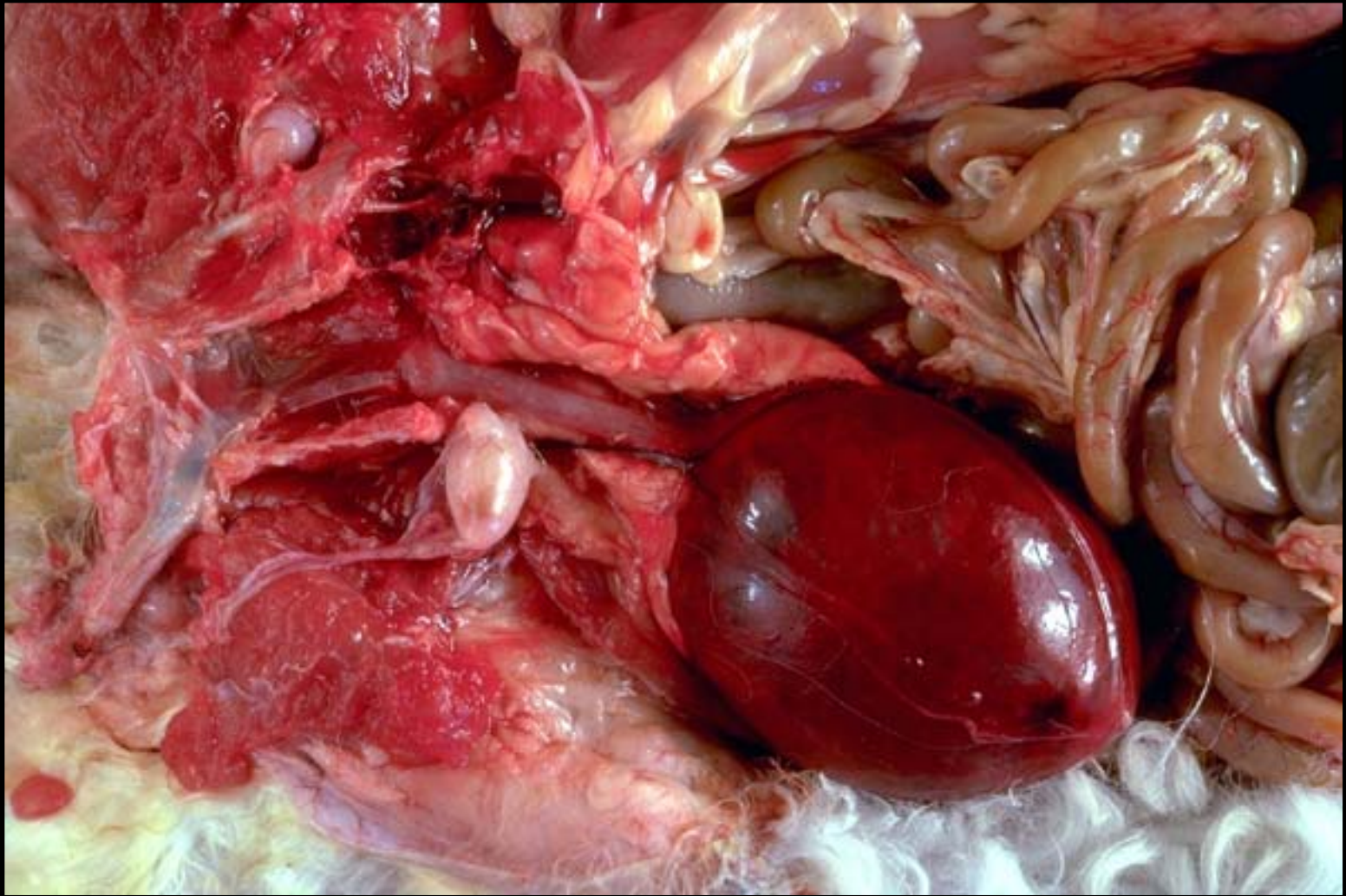
Dog – neurogenic bladder atony

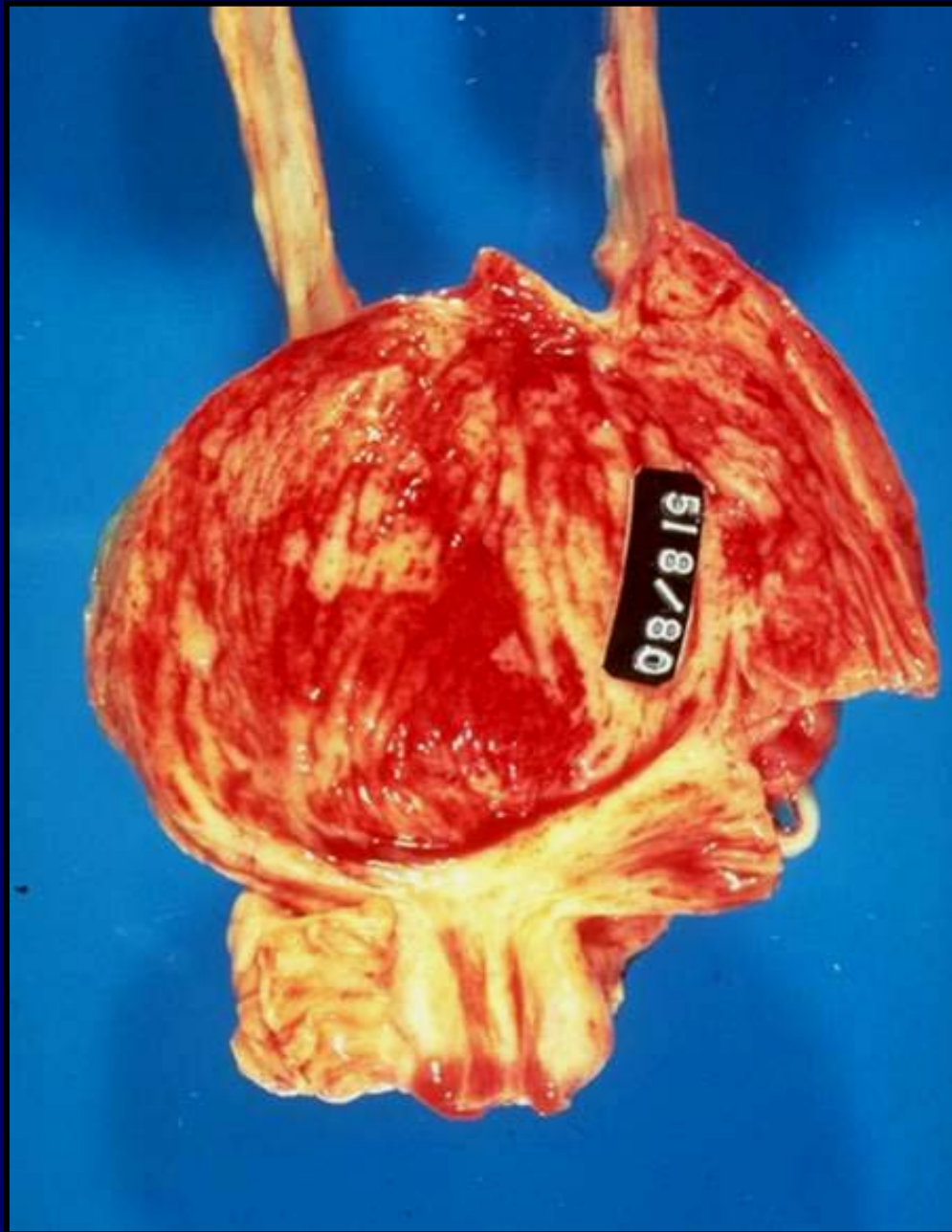


Dog – chronic polypoid cystitis with severe hypertrophy of the smooth muscle of the bladder

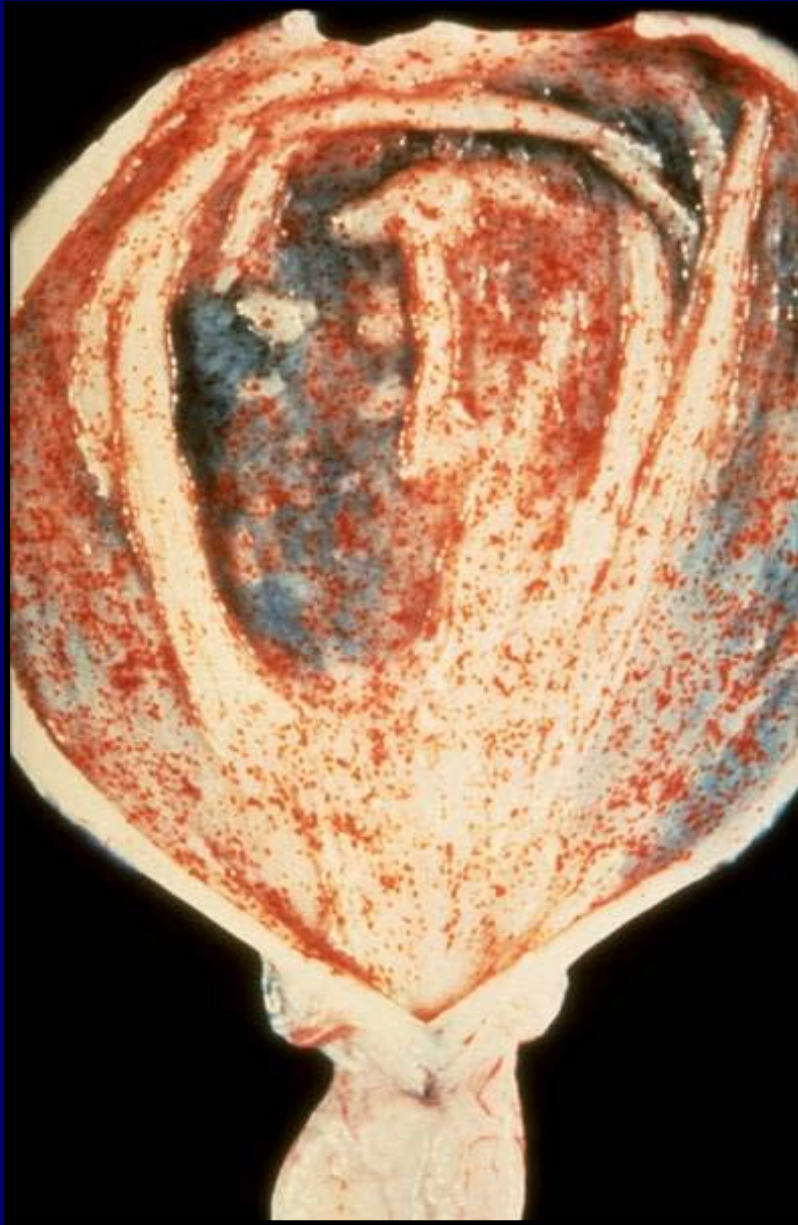


Cat – urethral obstruction by struvite crystals with haematuria, and marked bladder distension and venous infarction





Dog – acute
haemorrhagic
cystitis



Pig – bladder mucosal
petechiae and
submucosal haematomas
– swine fever (hog
cholera)

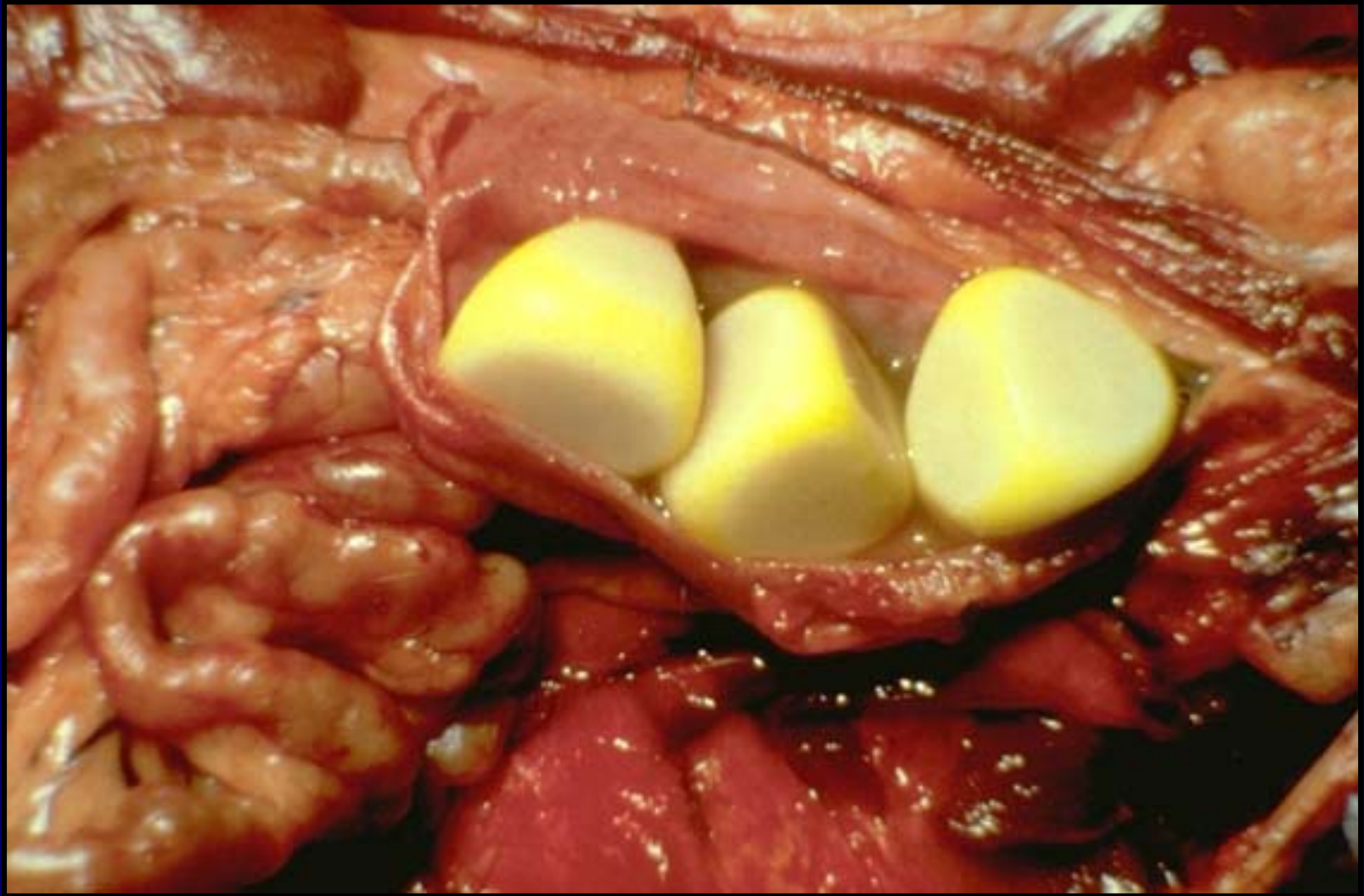
Dog – urolith from the urinary bladder





Dog – uroliths within
the urinary bladder

Dog – uroliths within the urinary bladder



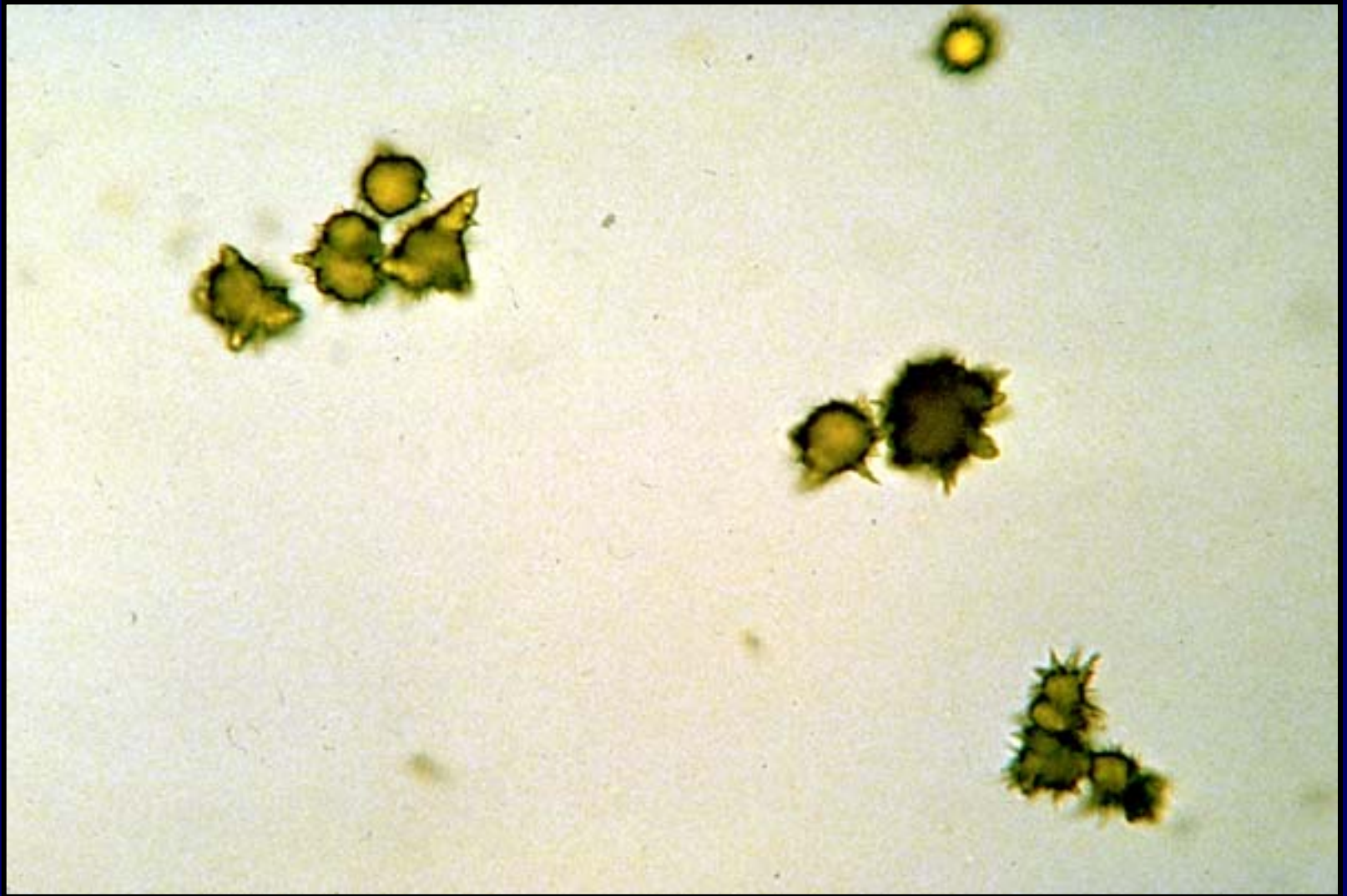
Dog – uroliths removed surgically from the urinary bladder



Sheep – staghorn clover stone in the renal pelvis



Ammonium biurate crystals in urine from a Dalmatian dog





Urate urolith in the renal pelvis of a Dalmatian dog



Decreased frequency
of urination may
promote
supersaturation of
urine

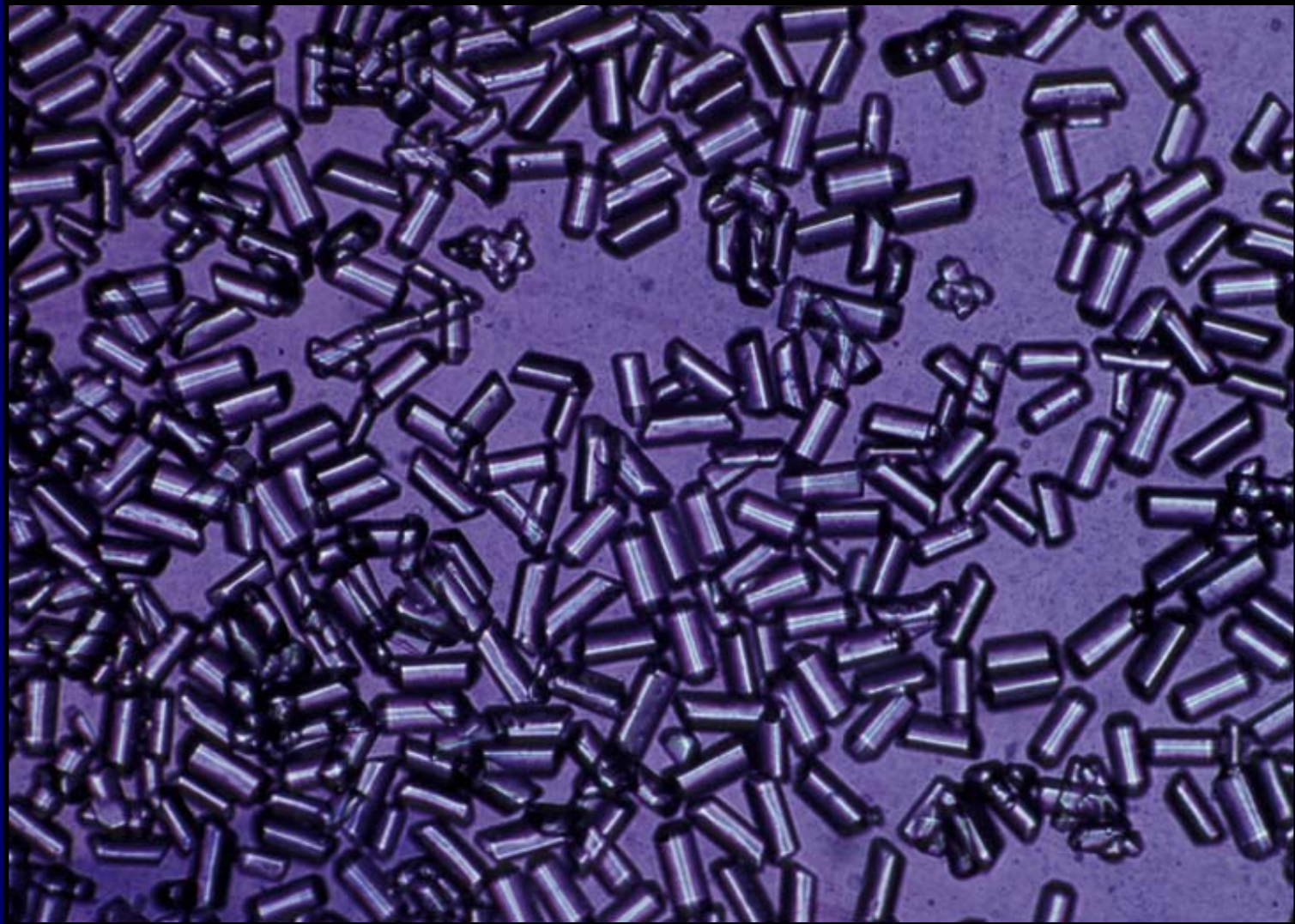
Calcium carbonate crystals are a normal finding in horse urine



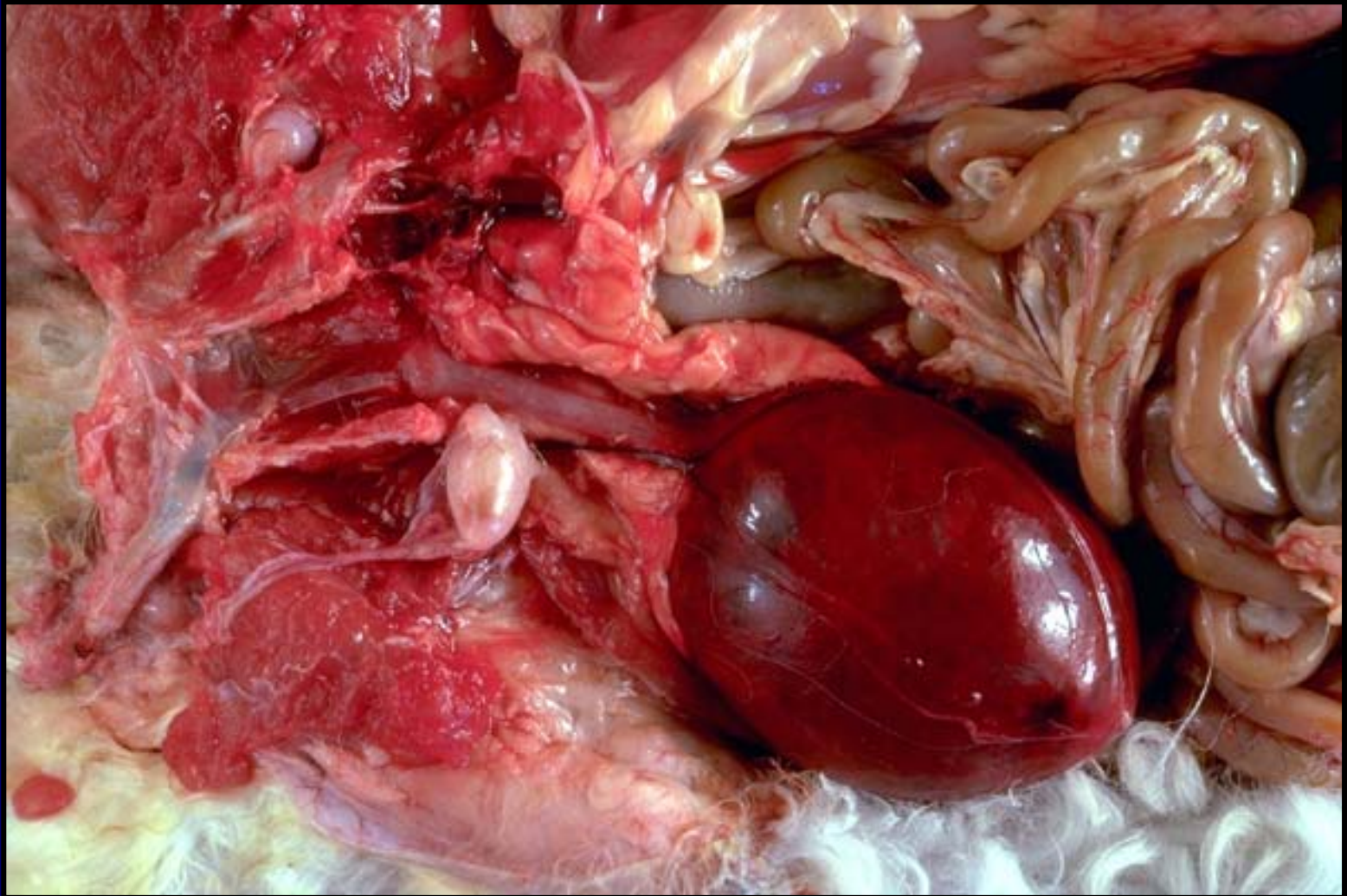
Cat – struvite crystals in urine



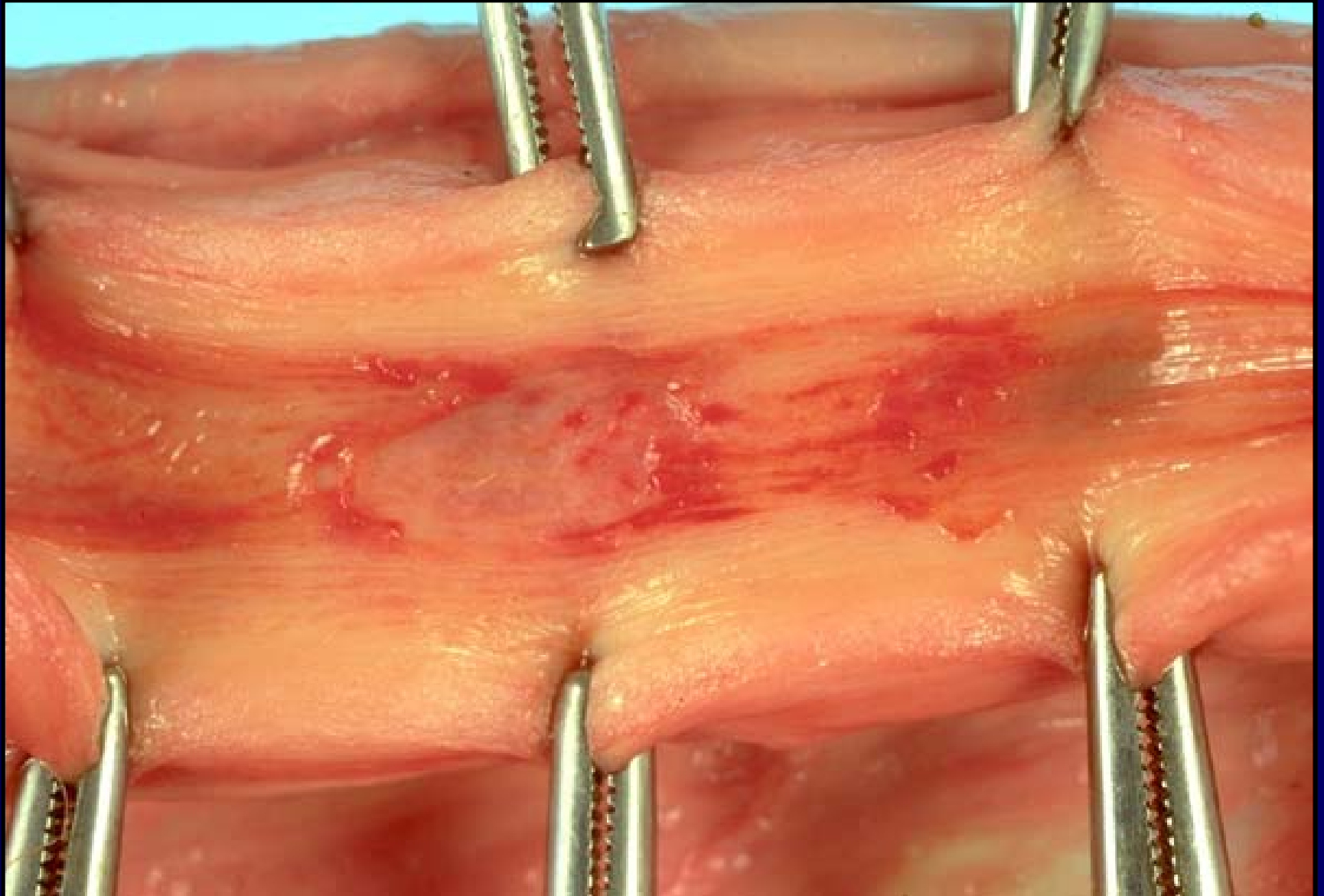
Abnormally numerous struvite crystals in cat urine



Tom cat – fatal urethral obstruction by struvite crystals



Bull – penile urethral ulceration due to urolithiasis



Bull – pressure necrosis of bladder mucosa due to urolithiasis



Wether – urethral obstruction by urolith with uroperitoneum

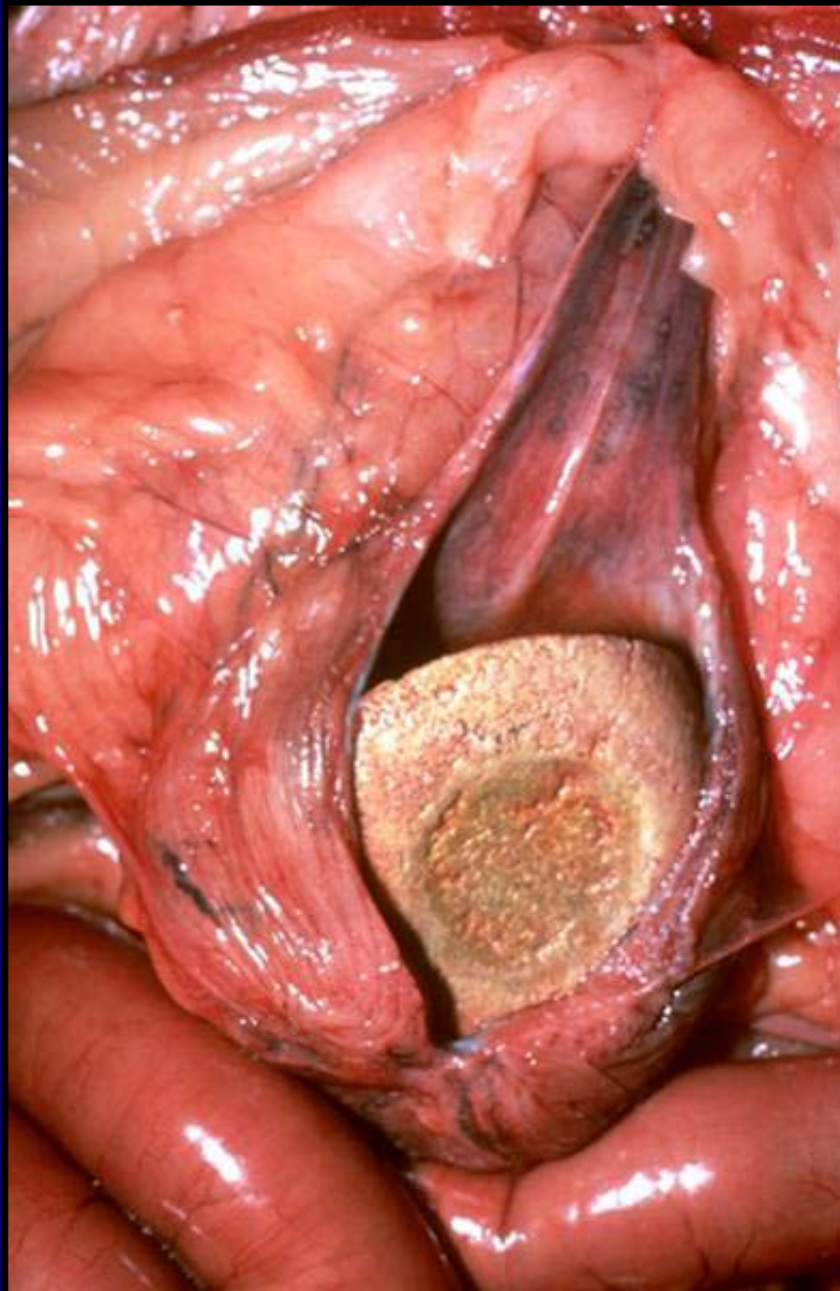




Wether – urethral
obstruction by urolith
with uroperitoneum

Foal – preputial swelling due to urethral rupture and sterile cellulitis



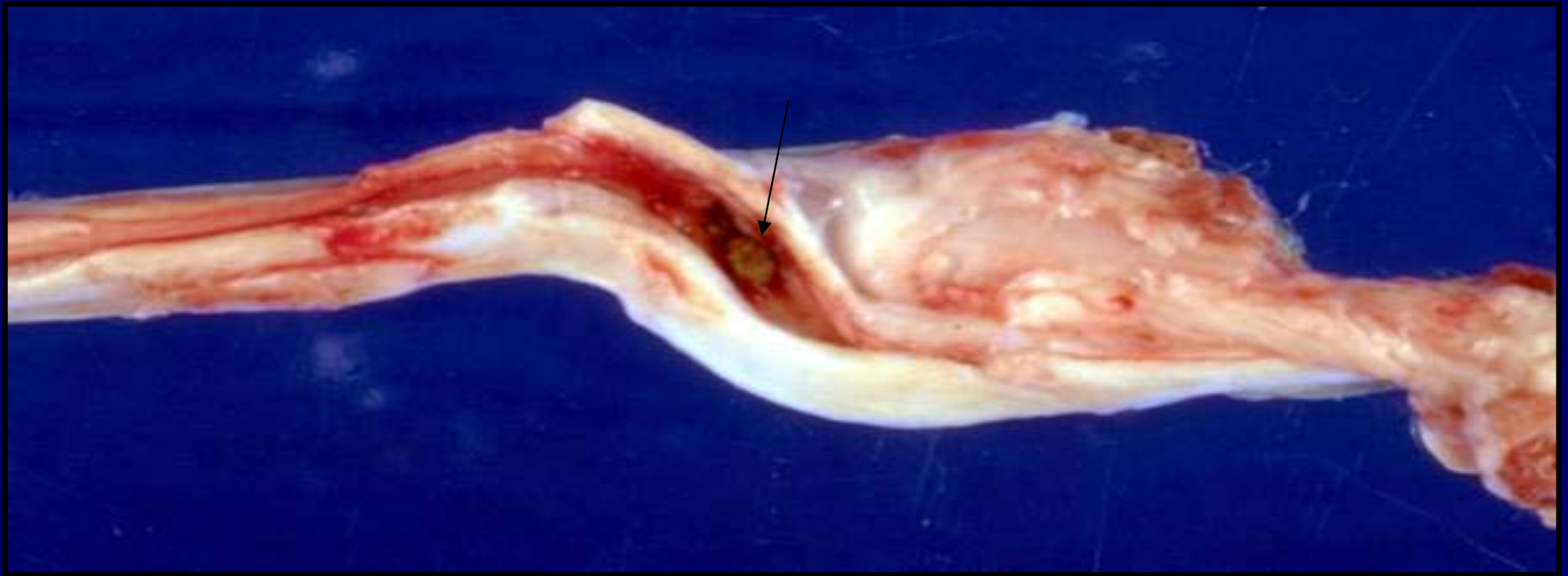


Bitch – large calculus in urinary bladder

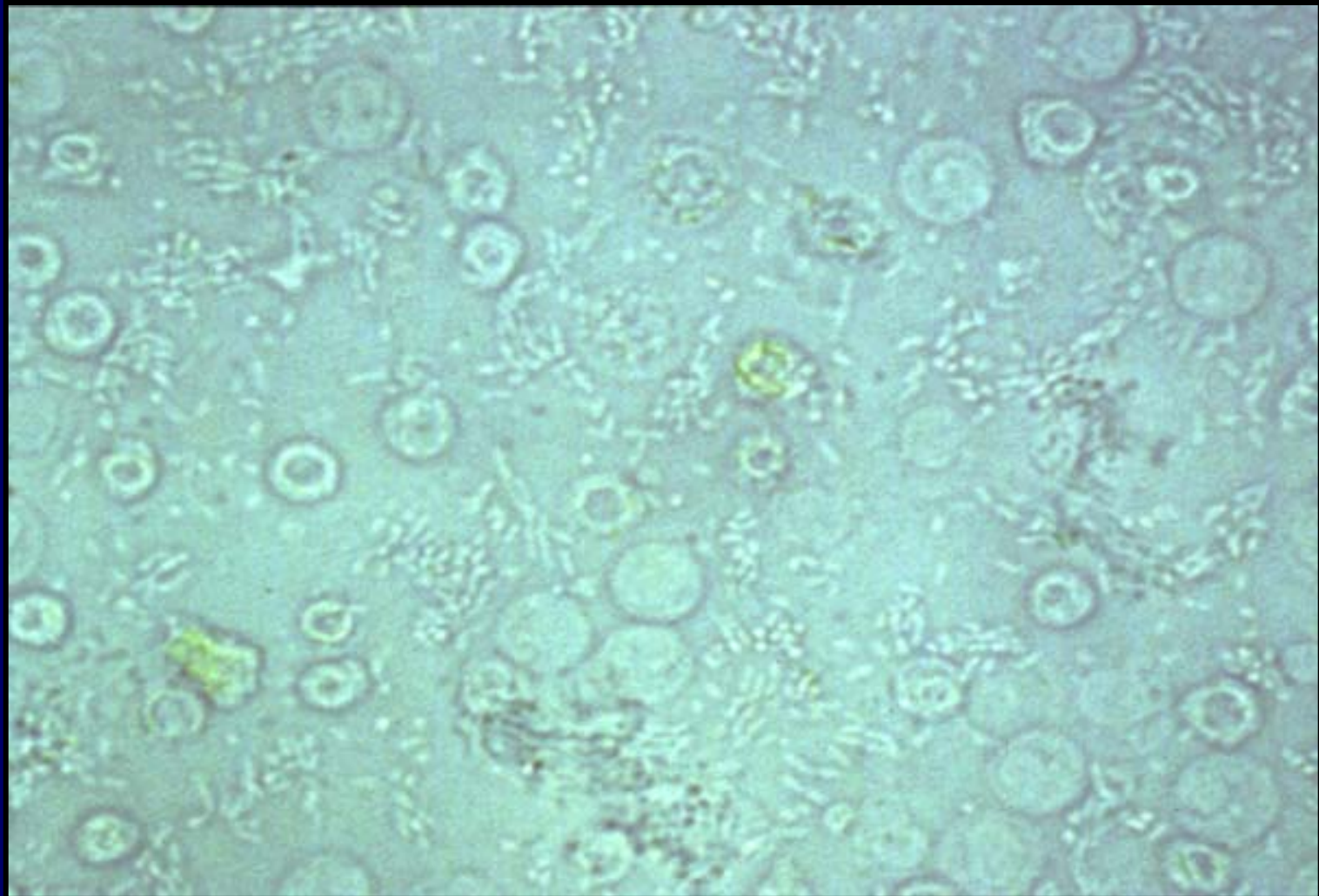
Ram – calculus in urethral process of the penis



Dog – calculus in urethra proximal to the os penis



Dog urine sediment – leukocytes and bacteria

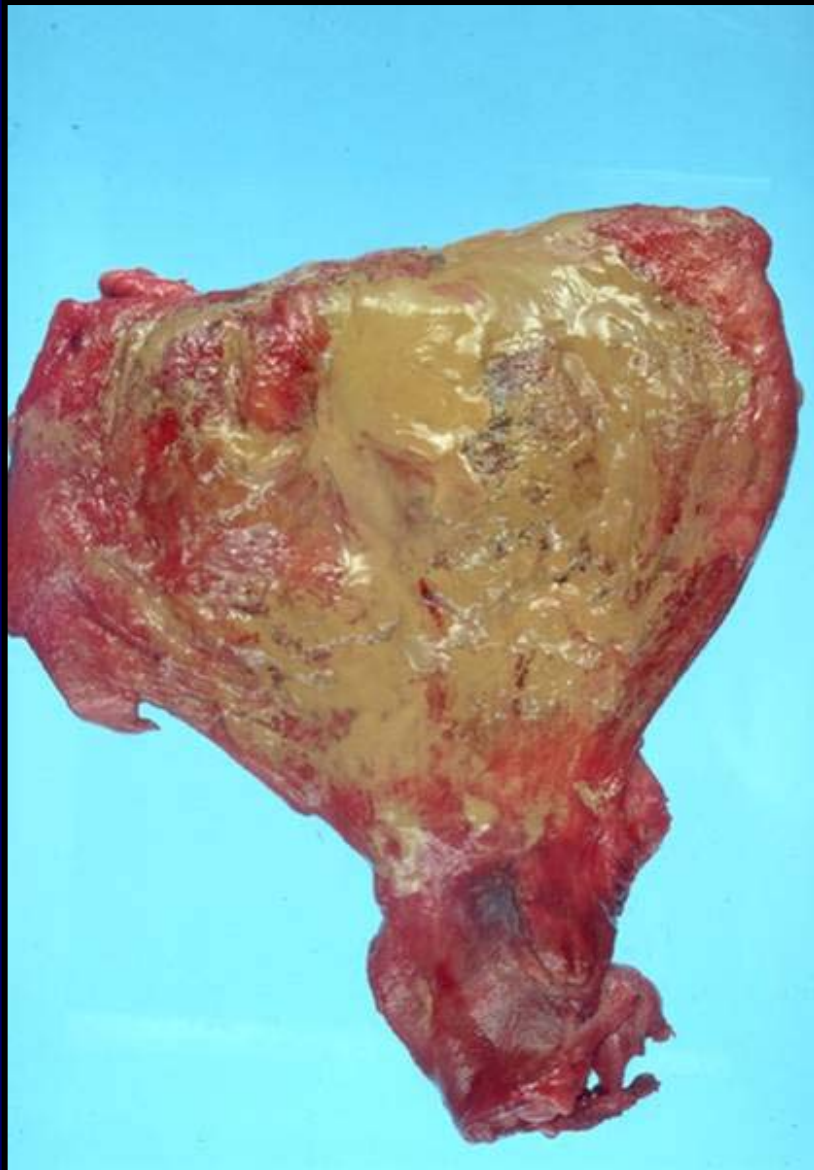


Diabetes mellitus and hyperadrenocorticism predispose
to secondary urinary tract infection

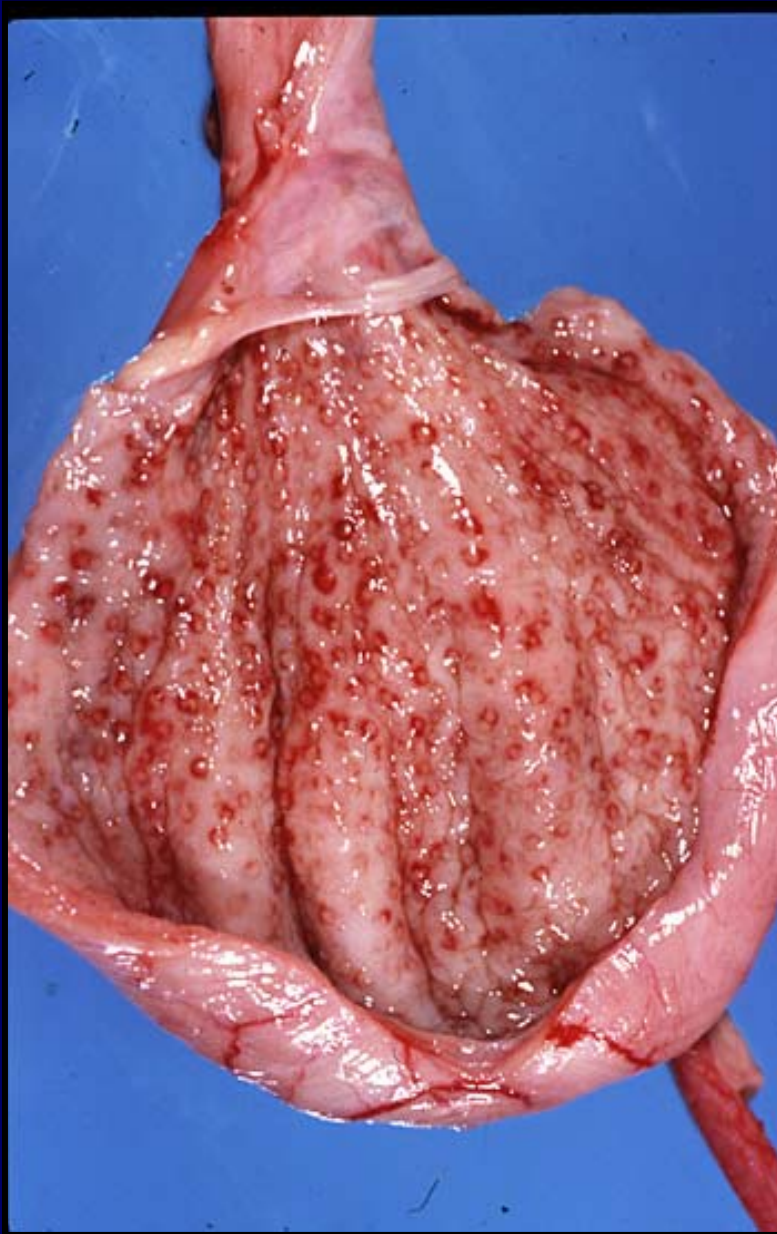


Dog – subacute cystitis
with urolithiasis

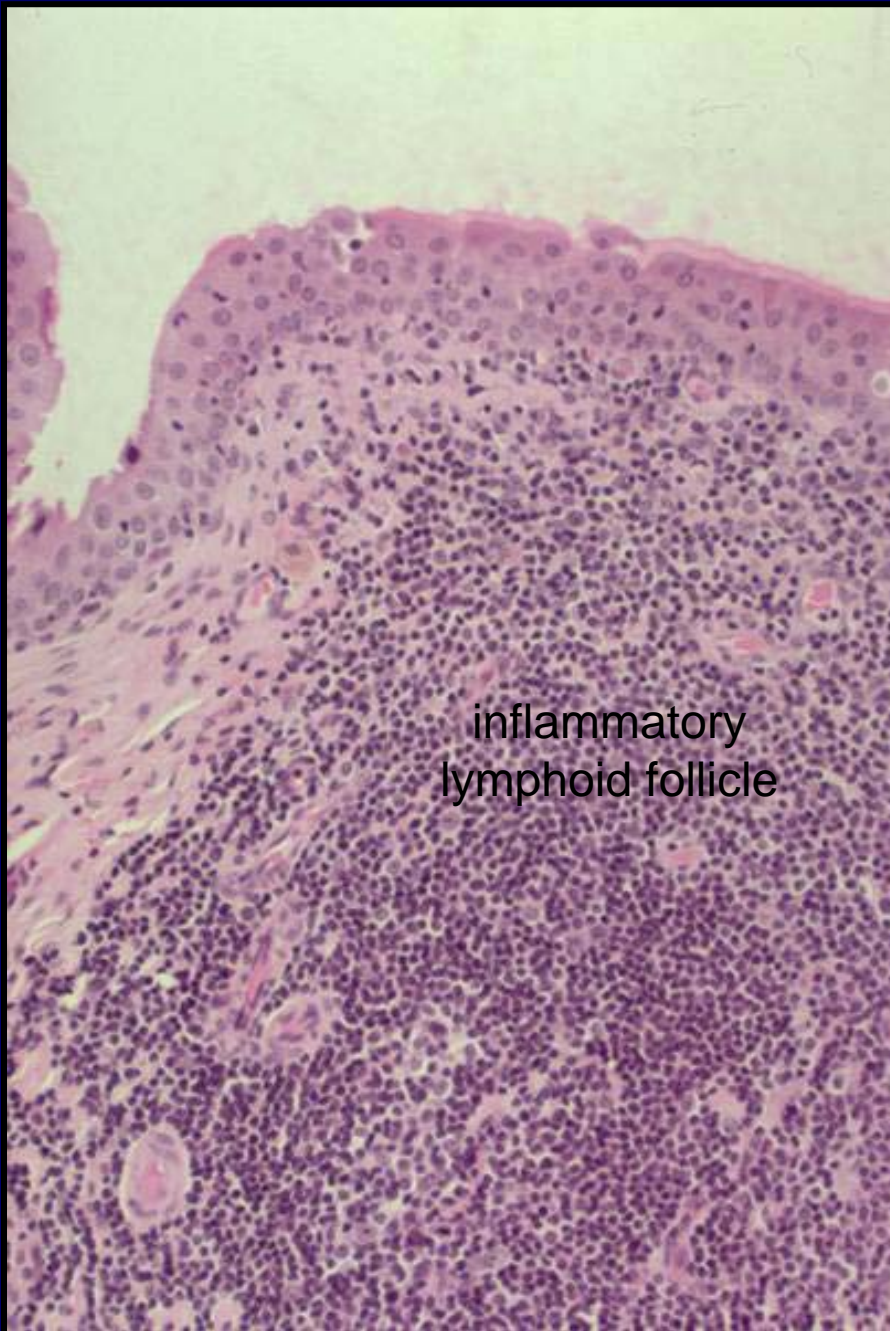




Dog – chronic
active cystitis



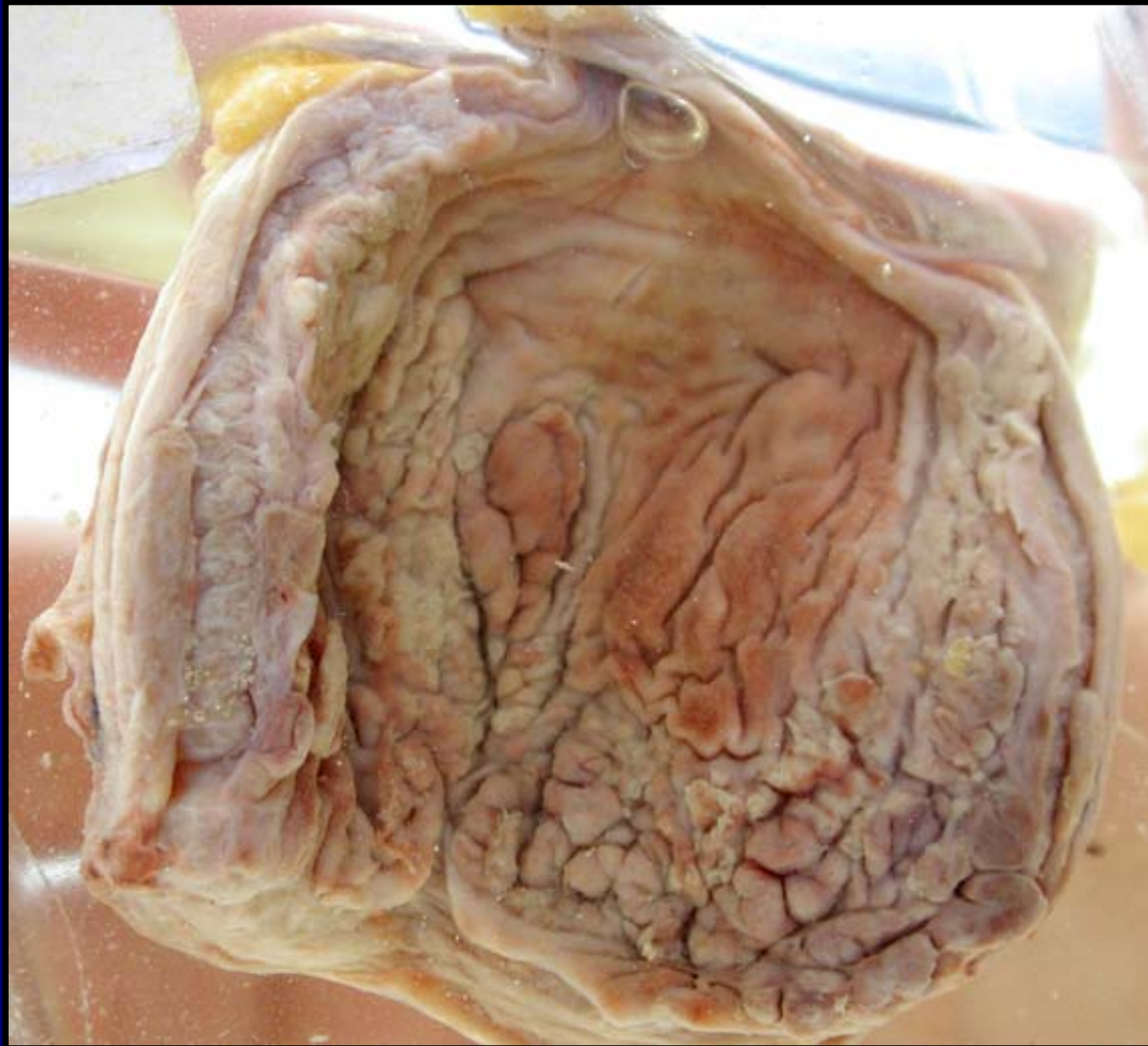
Dog – chronic active
follicular cystitis



inflammatory
lymphoid follicle

Dog – chronic follicular
cystitis

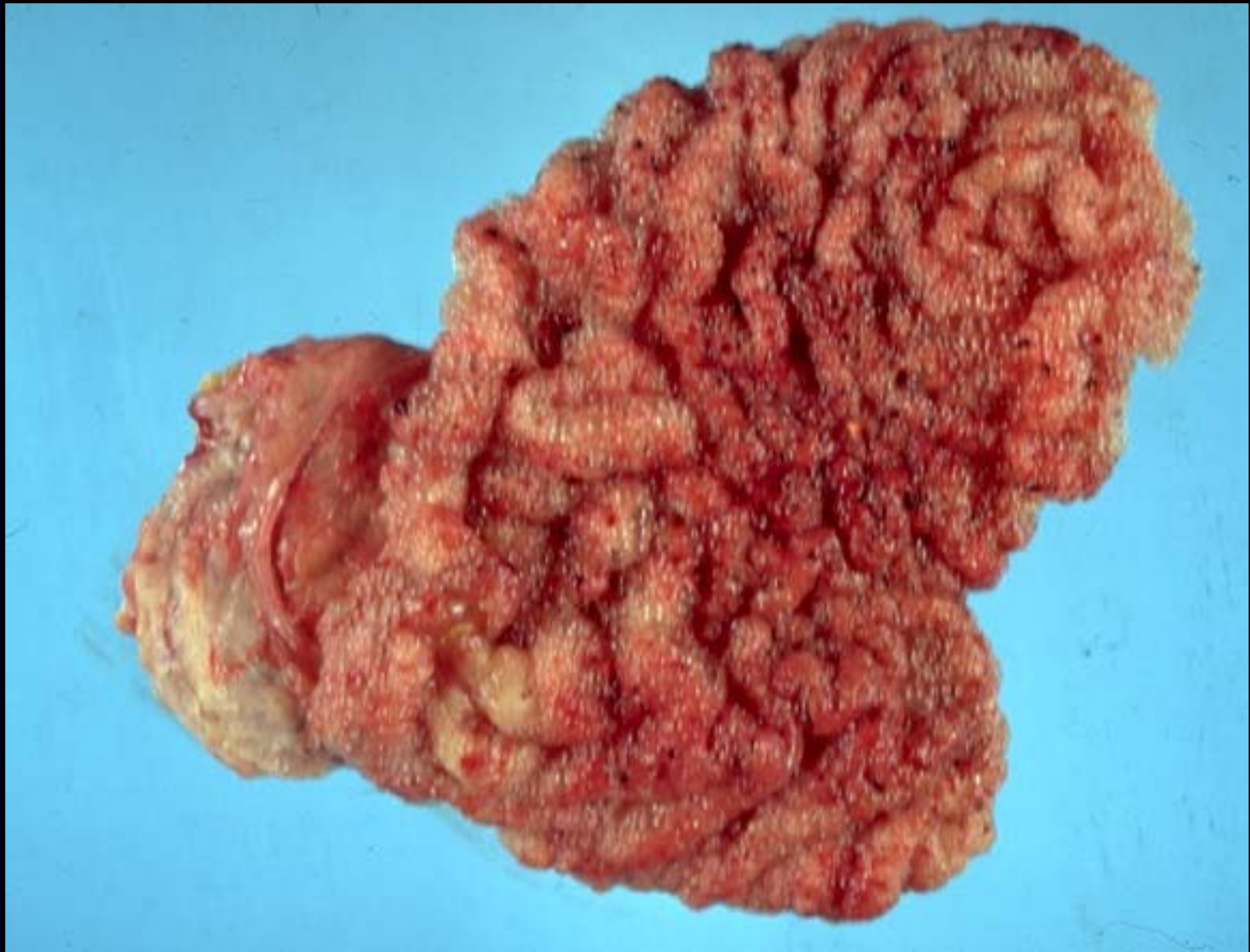
Dog – chronic polypoid cystitis with severe hypertrophy of the smooth muscle of the bladder





Dog – haemorrhagic
polypoid cystitis

Cow – emphysematous cystitis



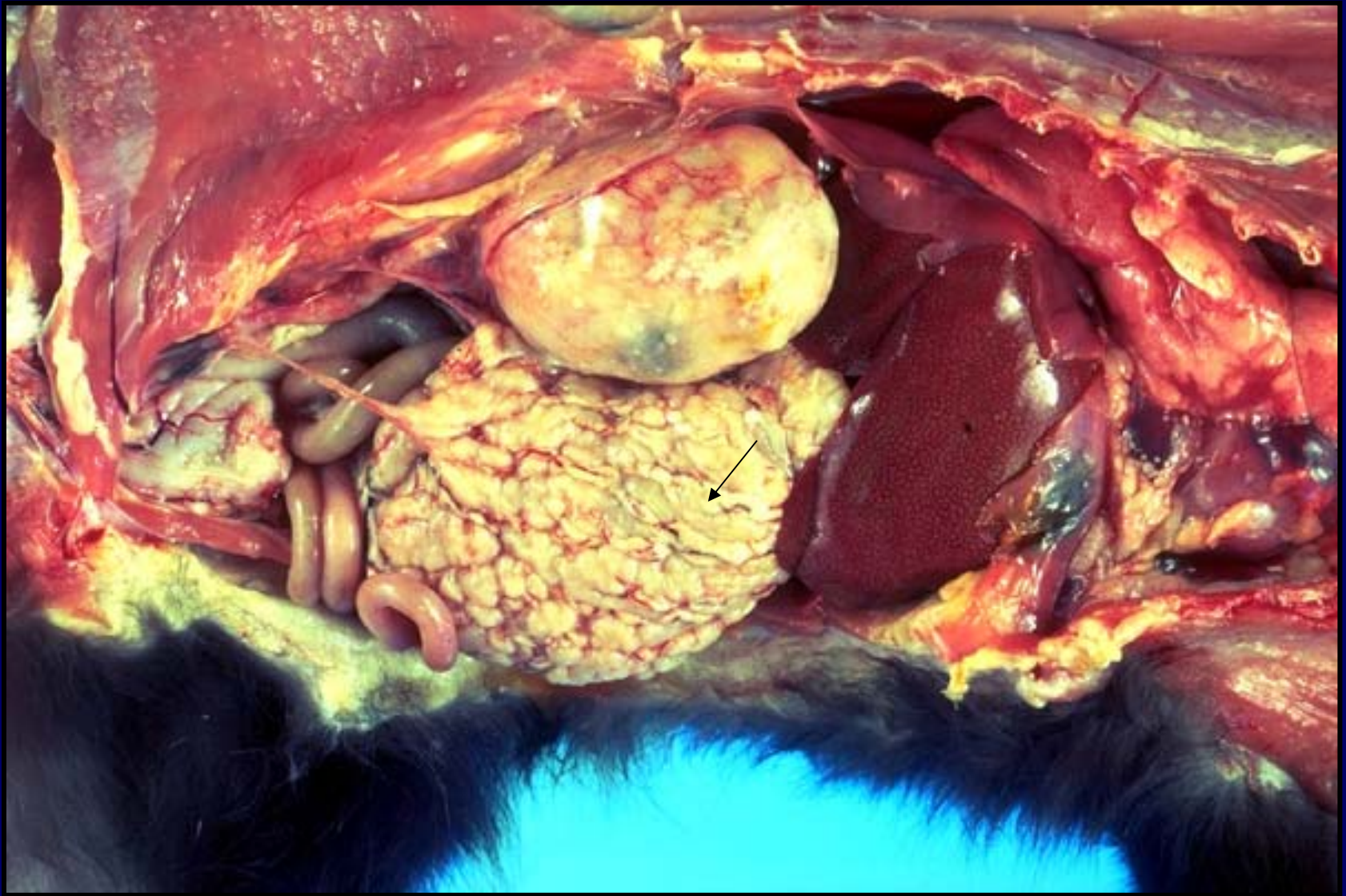
Exfoliated transitional cell carcinoma cells in urine sediment



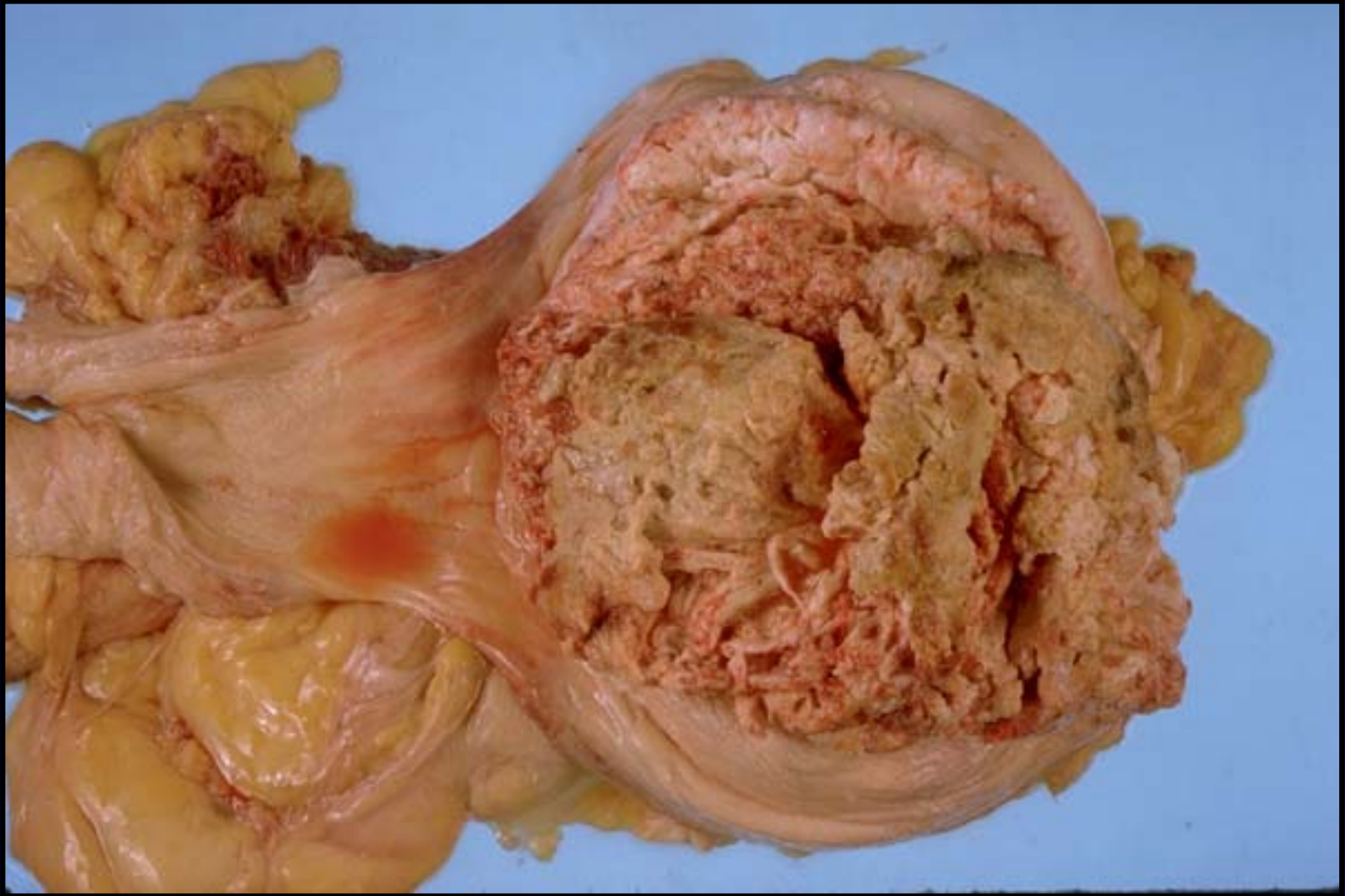


Transitional cell
carcinoma of the
urinary bladder in a
cow

Cat - peritoneal implantation of transitional cell carcinoma



Mare – squamous cell carcinoma of the urinary bladder



Cow - enzootic haematuria - transitional cell carcinoma of the urinary bladder

